

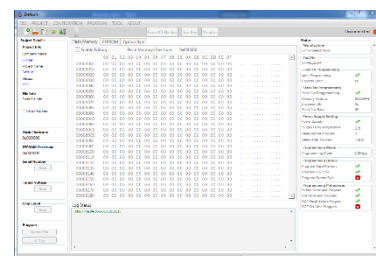
## IO-FLASHER Basic – STM8

IO-FLASHER – STM8 developed in India with the help of STMicroelectronics India. IO-FLASHER – STM8 is a programming tool for STM8 series microcontroller with on-chip FLASH, EEPROM and Option Byte memory with STM8 core. IO-FLASHER – STM8 is designed to flash the target device in Stand Alone mode or host controller mode.

- ❖ **Standard Programming Connector:** - Standard 4-Pin SWIM connector compatible with STMicroelectronics STM8 Eval board programming connectors.
  - ❖ **Offline Mode:** - Stand-alone SWIM programmer (Once set up, Flasher can be controlled without the use of PC program). Programming starts with simply button press.
  - ❖ **Online Mode:** - Programming can be done directly from IO-FLASHER GUI.
  - ❖ **Dual Mode:** - While IO-FLASHER is configured as offline mode. Its can be still used in online mode for same or different firmware code.
  - ❖ **Programmable Power Output:** - No power supply required, Powered through USB. Target board can be power from IO-FLATHER. Output voltage can be adjusted from 0 Volt to ~5Volt depending on selected target device (up to 200mA to target with overload protection).
  - ❖ **Target Power Sensing:** - If target is self-powered or powered from IO-FLASHER, then it can be measured by the IO-FLASHER.
  - ❖ **In-built Protection:** - All external port protected with ESD, Short circuit and over current. Isolation is available in Isolated version of IO-FLASHER (e.g. IO-FLASHER -STM8/ISOL)
- Programming Options:** - Have many programming options to program Flash, EEPROM, Option memory with auto lock feature.
- ❖ **Programming Indication:** - IO-Flashers has LED indication for ready, Programming complete and error state
  - ❖ **Supported devices:** - Support for all STM8 devices
    - STM8S, STM8L, STM8AF, STM8AL
  - ❖ **IO-FLASHER GUI:** - Highly professional GUI with simple and user-friendly interface. Visit [www.iotrue.com](http://www.iotrue.com) to download GUI for free.



IO-FLASH – STM8



IO-FLASH GUI